

## DECLARATIONS

U.S. Radio Frequency FCC Compliance

This device complies with Part 15 of the FCC Rules. Operation is subject to the following two conditions:

- (1) This device may not cause harmful interference, and
- (2) This device must accept any interference received, including interference that may cause undesired operation.

This equipment has been tested and found to comply with the limits for a Class B digital device, pursuant to Part 15 of the FCC Rules. These limits are designed to provide reasonable protection against harmful interference in a residential installation. This equipment generates, uses, and can radiate radio frequency energy and, if not installed and used in accordance with the instructions, may cause harmful interference to radio communications. However, there is no guarantee that interference will not occur in a particular installation. If this equipment does cause harmful interference to radio or television reception, which can be determined by turning the equipment off and on, the user is encouraged to try to correct the interference by one or more of the following measures:

- Reorient or relocate the receiving antenna.
- Increase the separation between the equipment and receiver.
- Connect the equipment into an outlet on a circuit different from that to which the receiver is connected.
- Consult the dealer or an experienced radio/TV technician for help.

Any Changes or modifications not expressly approved by the party responsible for compliance could void the user's authority to operate the equipment.

ISED RSS Warning:

This device complies with Innovation, Science and Economic Development Canada license-exempt RSS standard(s). Operation is subject to the following two conditions: (1) this device may not cause interference, and (2) this device must accept any interference, including interference that may cause undesired operation of the device.

## QUICK INDEX

Settings	Steps
1 Pairing	P1 (hold for 2s) > Stop (hold for 2s)
2 Switch Rotating Direction	Up + Down (hold for 2s)
3 Set Upper/Lower Limits	Upper Limit: Up (hold for 2s) > Up + Stop (hold for 2s) Lower Limit: Down (hold for 2s) > Down + Stop (hold for 2s)
4 Add/Remove Fav. Position	P2 > Stop > Stop
5 Roller/Sheer Mode Switch	Up + Down (hold for 5s) > Stop
6 Adjusting the Limits	Upper: Up + Stop (hold for 5s) > Up or Dn + Up + Stop (hold for 2s) Lower: Dn + Stop (hold for 5s) > Up or Dn + Dn + Stop (hold for 2s)
7 Add/Remove a Remote	P2 (existing) > P2 (existing) > P2 (new)
8 Speed Regulation	Increase Motor Speed: P2 > Up > Up Decrease Motor Speed: P2 > Down > Down

## TROUBLESHOOTING

### Problem - The motor has no response

Cause	Solution
Battery in motor is depleted	Recharge with compatible AC adaptor and check connection and positioning of solar panel
Insufficient charging from Solar Panel	Check connection and orientation of solar panel.
Wall switch battery is discharged or not installed properly	Replace battery or check placement.
Radio interference / shielding	Ensure wall switch and the antenna on the motor are positioned away from metal objects.

Receiver distance is too far	Move wall switch to a closer position.
Power failure	Check power supply to motor is connected/active.
Incorrect wiring	Check that wiring is connected correctly.

### Problem - The Motor beeps 10 times when in use

Cause	Solution
Battery voltage is low/ SolarPanel Issue	Recharge with AC adapter or check connection and positioning of solar PV panel

### Problem - Cannot program a single motor (multiple motors respond)

Cause	Solution
Multiple Motors are paired to the same	Always reserve a channel for programming. BEST PRACTICE - Provide an extra 15 channel remote in your multi-motor projects for individual control and programming purposes To work on a single motor at a time, place all other motors into sleep mode. Press the "P1" button (about 6 ec) on the motor head until motor jog x2 and beep x2.

# BLISS™

## AUTOMATION

by ALTA



## SURFACE MOUNTED WALL SWITCH

## PROGRAMMING AND USERS GUIDE

## SPECIFICATIONS

Voltage	3V (CR2430)
Radio Frequency	433.92 MHz Bi-directional
Transmitting Power	10 milliwatt
Operating Temperature	14°F to 122°F (-10°C to 50°C)
RF Modulation	FSK
Lock Function	Yes
IP Rating	IP20
Transmission Distance	up to 200m (outdoor)

## SAFETY INSTRUCTIONS

1. Do not expose motor to humid, damp, or extreme temperature conditions.
2. Do not drill into motor.
3. Do not cut the antenna. Keep it clear from metal objects.
4. Do not allow children to play with this device.
5. If the power cable or connector is damaged, do not use.
6. Ensure the power cable and antenna are clear and protected from moving parts.
7. Cable routed through walls should be properly isolated.
8. Motor should be mounted in horizontal position only.
9. Before installation, remove unnecessary cords and disable equipment not needed for powered operation.

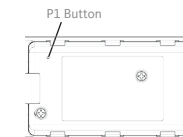
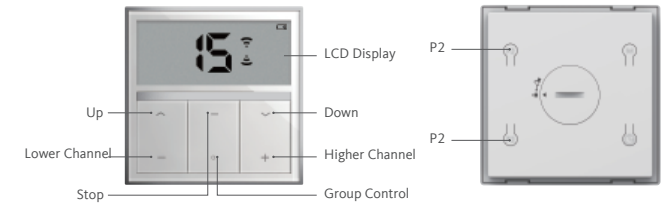


Do not dispose of in general waste.  
Please recycle batteries and damaged electrical products appropriately.

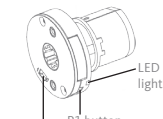
## WALL SWITCH OVERVIEW

Please read prior to installation and use. Save these instructions for future reference.

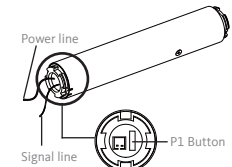
## BUTTON INSTRUCTIONS



HORIZONTAL  
BLIND  
TILT MOTOR



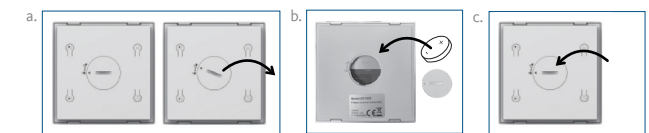
Lithium Battery Switch  
ROLLER / SHEER  
DUAL / WOVEN  
MOTOR



HONEYCOMB  
CELLULAR  
MOTOR

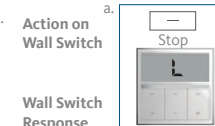
## REPLACING THE BATTERY

- a. Unscrew with the screwdriver then gently press down the cover.
- b. Install battery (CR2430) with positive (+) side facing up.
- c. Gently assemble the cover back and replace screw with screwdriver.

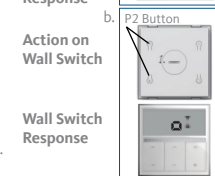


## ADVANCED SETTING - DISABLE LIMIT SETTING

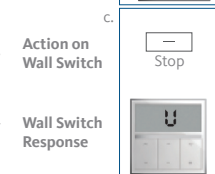
- a. Press and hold "Stop" button more than 15s. Wall Switch will show "L" (lock).



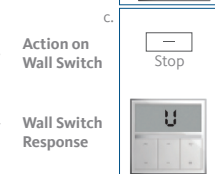
- b. In the next 10s, press one "P2" button on the back of Wall Switch. Wall Switch will show "o", then the Wall Switch switches to "Lock" mode to disable the following commands:
  - Change Motor Direction
  - Setting the Upper and Lower Limit
  - Adjust Limit
  - Roller Mode or Sheer Mode



- c. Press and hold "Stop" button more than 15s. Wall Switch will show "U" (unlock).



- d. In the next 10s, press one "P2" button on the back of Wall Switch. Wall Switch will show "o". The Wall Switch now switches to "Unlock" mode, you can access all control functions.

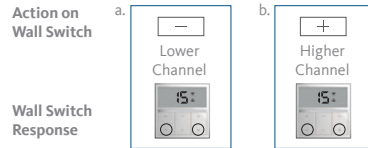


\*This advanced feature is intended to be used after all shade programming is completed. User Mode will prevent accidental or unintended changing of limits.

## CHANNEL OPTIONS

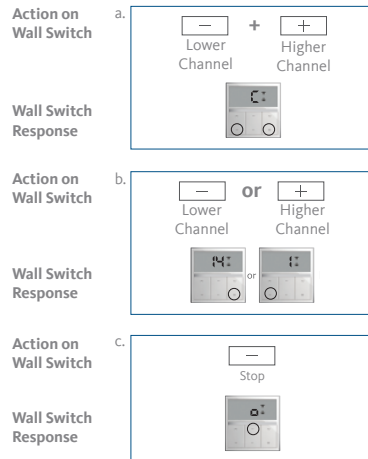
### SELECT A CHANNEL

- a. Press “-” button on the wall switch to select a lower channel.  
b. Press “+” button on the wall switch to select a higher channel.



### HIDE UNUSED CHANNELS

- a. Press and Hold (about 3 sec) “-” and “+” buttons simultaneously until wall switch displays “C” (channel).  
b. Press “-” or “+” button to select required quantity of channel (between 1 to 15).  
c. Press “Stop” button to confirm selection (the example shows a 5-channel selection). The LED will display “O” (OK) once to confirm selection.



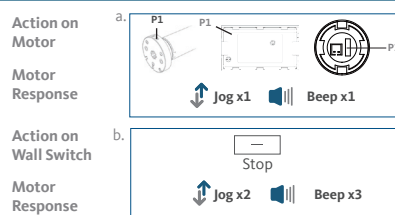
## GETTING STARTED

It is important to confirm that the motor is awake and ready to receive programming. To do this, press “P1” button on the motor less than 1 sec, to activate the motor from Sleep Mode.

### 1. PAIR / UNPAIR WALL SWITCH

\*Honeycomb / Cellular and Horizontal Blind Motors DO NOT BEEP.

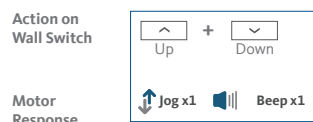
- a. Press “P1” button (about 2 sec) on the motor head until motor jog x1 and beep x1.  
b. In the next 10 secs, press and hold “Stop” button on the wall switch until motor jog x2 and beep x3.  
\* Repeat the same procedure to unpair wall switch.



### 2. CHANGE MOTOR DIRECTION (IF NECESSARY)

Press “Up” or “Down” button to check if the shade moves in the desired direction.

If you need to reverse the direction, press and hold (about 2 sec) “Up” and “Down” buttons simultaneously until motor jog x1 and beep x1.

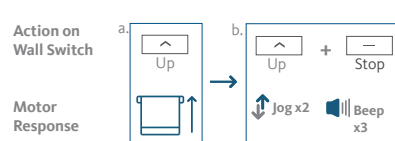


\*The operation is only valid when there are no limits. If the motor has already set the upper and lower limit, then you can only switch direction by pressing “P1” button (about 10 sec) on the motor head until motor jog x3 and beep x3.

### 3. SETTING THE UPPER AND LOWER LIMITS

#### SET UPPER LIMIT

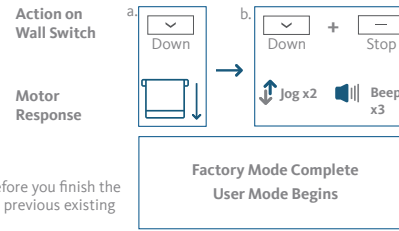
- a. Press “Up” button to raise the shade, then press “Stop” button when it is in the desired upper limit.  
b. Press and hold (about 5 sec) “Up” and “Stop” buttons simultaneously until motor jog x2 and beep x3.



#### SET LOWER LIMIT

- a. Press “Down” button to lower the shade, then press “Stop” button when it is in the desired lower limit.  
b. Press and hold (about 5 sec) “Down” and “Stop” buttons simultaneously until motor jog x2 and beep x3.

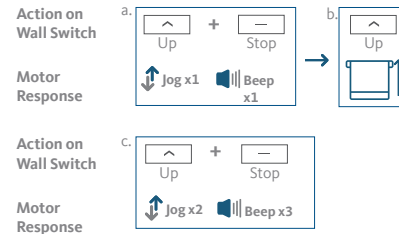
\*If you exit the limit setting status before you finish the limit settings, the motor will take the previous existing limits.



## 4. ADJUST LIMITS

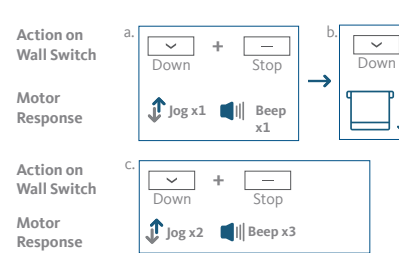
#### ADJUST THE UPPER LIMIT

- a. Press and hold (about 5 sec) “Up” and “Stop” buttons simultaneously until motor jog x1 and beep x1.  
b. Use “Up” button to raise the shade to the desired highest position, and use “Up” or “Down” button to do the final adjustment if necessary.  
c. Press and hold (about 5 sec) “Up” and “Stop” buttons simultaneously until motor jog x2 and beep x3.



#### ADJUST THE LOWER LIMIT

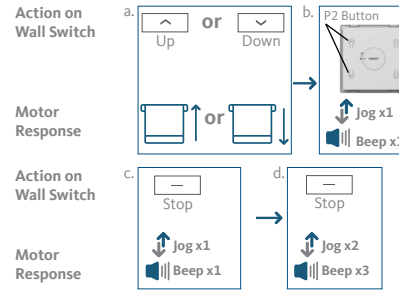
- a. Press and hold (about 5 sec) “Down” and “Stop” buttons simultaneously until motor jog x1 and beep x1.  
b. Use “Down” button to lower the shade to the desired lowest position, and use “Up” or “Down” button to do the final adjustment if necessary.  
c. Press and hold (about 5 sec) “Down” and “Stop” buttons simultaneously until motor jogs x2 and beeps x3.



## 5. FAVORITE POSITION

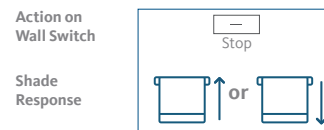
#### SET FAVORITE POSITION

- a. Use “Up” or “Down” button to move the shade to desired Favorite position.  
b. Press and hold (about 2 sec) one “P2” button on the back of wall switch until motor jog x1 and beep x1.  
c. Press and hold (about 2 sec) “Stop” button until motor jog x1 and beep x1.  
d. Once more, press and hold (about 2 sec) “Stop” button until motor jog x2 and beep x3.



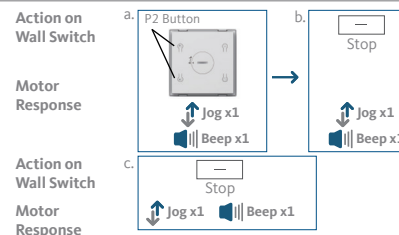
#### SEND SHADE TO FAVORITE POSITION

Press and hold (about 2 sec) “Stop” button, motor will move to Favorite position.



#### DELETE FAVORITE POSITION

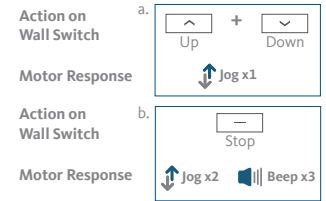
- a. Press and hold (about 2 sec) one “P2” button until motor jog and beep x1.  
b. Press and hold (about 2 sec) “Stop” button until motor jog and beep x1.  
c. Once more, press and hold (about 2 sec) “Stop” button until motor jog x1 and long beep x1.



## 6. ROLLER MODE AND SHEER MODE

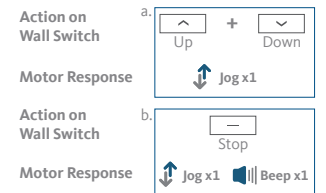
#### ROLLER SHADE MODE -Default mode, allows for continuous raising/lowering of shade after a short press.

- a. Press and hold (about 5 sec) “Up” and “Down” buttons simultaneously until motor jog x1.  
b. Press and hold (about 2 sec) “Stop” button until motor jog x2 and beep x3.



#### SHEER SHADE MODE - Allows for slight adjustment after a short press and raising / lowering of shade after a longer press.

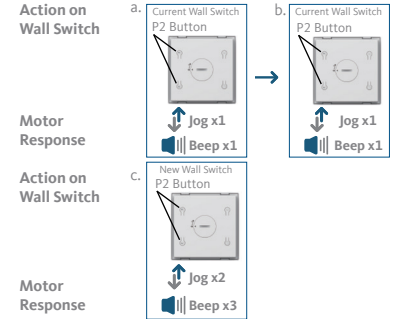
- a. Press and hold (about 5 sec) “Up” and “Down” buttons simultaneously until motor jog x1.  
b. Press and hold (about 2 sec) “Stop” button until motor jog x1 and beep x1.



## 7. ADD OR REMOVE ADDITIONAL WALL SWITCH

#### USING CURRENT WALL SWITCH

- a. On the **current** wall switch, press and hold (about 2 sec) one “P2” button until motor jog x1 and beep x1.  
b. Once more, on the **current** wall switch, press and hold (about 2 sec) one “P2” button until motor jog x1 and beep x1.  
c. On the **New** wall switch, press and hold (about 2 sec) one “P2” button until motor jog x2 and beep x3.



\*Repeat the same procedure to remove additional wall switch.

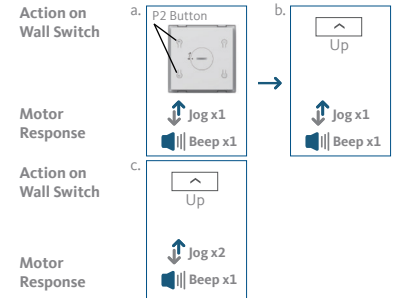
#### NEW WALL SWITCH CONTROL

Follow instructions under the section 1. Pair / Unpair Wall Switch

## 8. ADJUST MOTOR SPEED

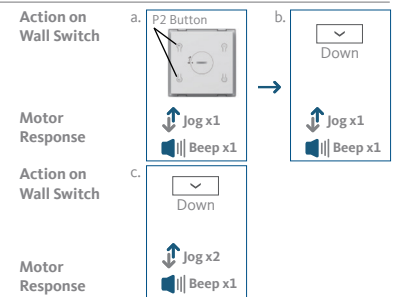
#### INCREASE MOTOR SPEED

- a. Press one “P2” button until motor jog x1 and beep x1.  
b. Press “Up” button until motor jog x1 and beep x1.  
c. Once more, press “Up” button until motor jog x2 and beep x1.



#### DECREASE MOTOR SPEED

- a. Press one “P2” button until motor jog x1 and beep x1.  
b. Press “Down” button until motor jog x1 and beep x1.  
c. Once more, press “Down” button until motor jog x2 and beep x1.



\*If the motor has no response, it already has a Maximum or Minimum speed.